

inLoop™ Crude Oil Sampler



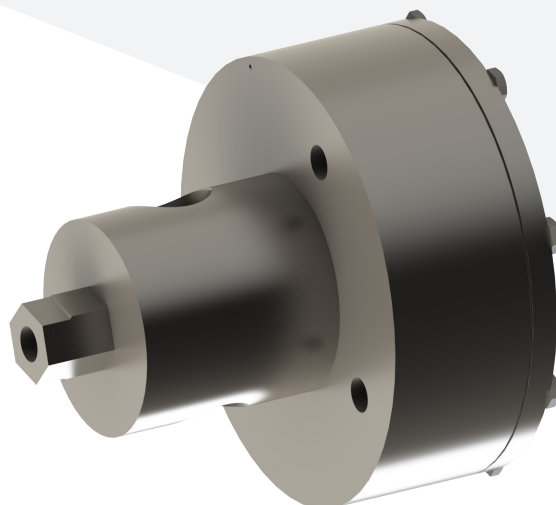
The inLoop™ Crude Oil Sampler is a fixed volume positive displacement pump designed for crude oil and light liquid sampling applications. Ideal for lines up to 1", incorporate the inLoop™ into a bypass sampling system to collect quality sample grabs proportional to flow or time.

Features

- Double-acting piston motor
- Fixed volume positive displacement collection heads
- Inline relief at sample outlet

Benefits

- Pumping power capable of sampling high-viscosity products
- Capture and fully push samples to the sample container
- Piston-style collection head compatible with extreme temperatures, high pressures, and chemical contaminants
- Prevents collected samples from flowing back to the pipeline if pipeline pressure drops



SPECIFICATIONS

INLOOP™ CRUDE OIL SAMPLER

inLoop™

Materials of Construction	316/316L Stainless Steel, Fluorotrel®, PTFE, Viton®
Pipeline Spool Connection	Size: 1" or 1½"
	Rating: 150, 300, 600, 900, or 1500 ANSI RF
Process Connection	¼" FNPT
	½" FNPT
	1" FNPT
Sample Outlet Connection	¼" FNPT
Motor Housing Actuation Ports	25 cc Cylinder and 50 cc Purge (Standard)
Utility Requirements	Hydraulic or Pneumatic Supply: 40–65 psig
Sample Volume	B-Style Collection Head: 0.5 cc, 1 cc, or 2 cc
	Vanishing Chamber™ Collection Cup: 0.22 cc, 0.5 cc, 1 cc, or 1.5 cc
Operation	Piston-Operated Motor
Operating Pressure	150 ANSI Stainless Steel: 275 psig @ -20 °F to 100 °F
	300 ANSI Stainless Steel: 720 psig @ -20 °F to 100 °F
	600 ANSI Stainless Steel: 1440 psig @ -20 °F to 100 °F
	900 ANSI Stainless Steel: 2160 psig @ -20 °F to 100 °F (
	1500 ANSI Stainless Steel: 3600 psig @ -20 °F to 100 °F
	FNPT Process Connection: 3600 psig @ -20 °F to 100 °F
Industry Standards	API Chapter 8.2, ASTM D4177, ISO 3171

Weight and/or dimensions are approximate.
Specifications subject to change without notice.

