



SX PSignature Series Ultrasonic Flowmeter

PSignature Series

SX Steam Ultrasonic Flowmeter

Applications

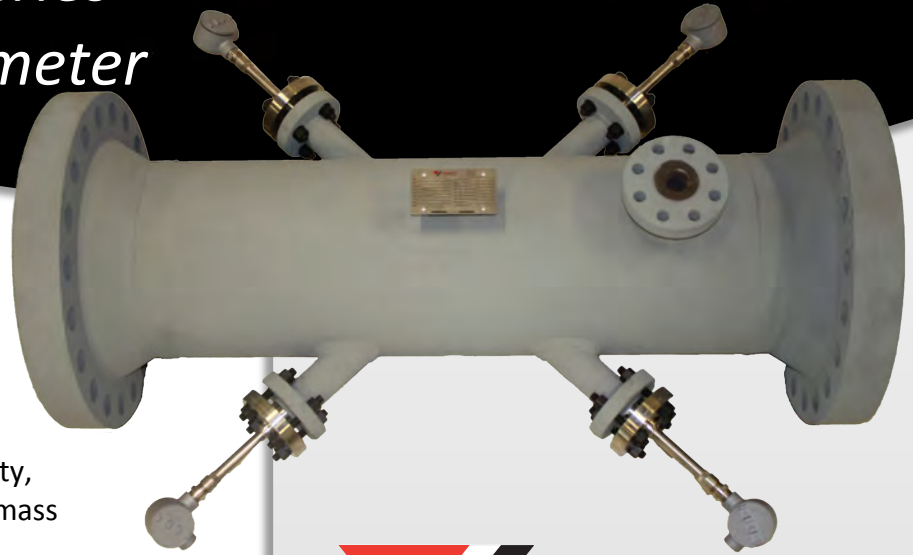
- Saturated Steam
- Superheated Steam

Features

- Measures Velocity, Volumetric and mass Flow
- High turndown ratio
- Low Cost and custom design options

Why purchase flowmeters from Procon?

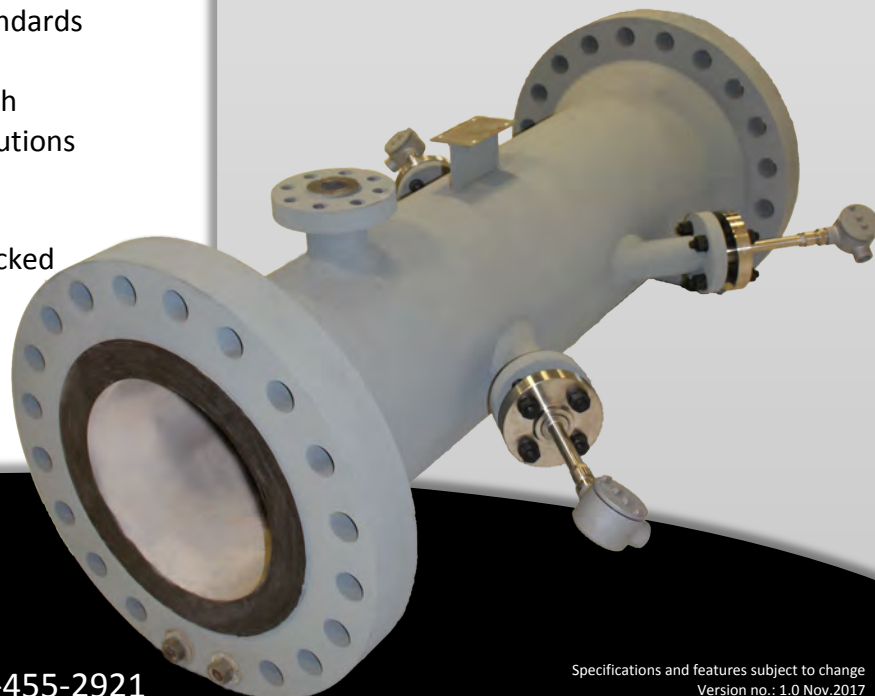
- Flowmeters completely assembled, tested, inspected and shipped ready for installation
- All quotes include calculations with accuracy and specific drawings
- Meets all applicable North American codes and standards (Details specified on quotes and drawings)
- Combines tested, proven and new technologies with engineering and experience to provide the best solutions for our valued customers.
- More than 25 Years of Ultrasonic Flow Meters and service. Factory trained service technicians and stocked parts to minimize downtime.



PROCON
SYSTEMS

Procon has designed, assembled and tested ultrasonic flowmeters for over 20 years with thousands of installations. All our flowmeters are engineered to meet specific application and customer requirements at very competitive prices

www.proconsystems.com



CANADA

Toll Free 1-866-255-2921

USA

Toll Free 1-866-455-2921

Specifications and features subject to change
Version no.: 1.0 Nov.2017

SX PSignature Series Ultrasonic Flowmeter

General Specifications:

For additional technical details see ordering information.

Flowcell

Flow/Accuracy:	Typical $\pm 2.0\%$ of velocity reading 1m/s to 85 m/s Flow calculations with Accuracy Statements provided for each application. Accuracy can be improved with calibration. Typical Accuracies based on 6" or larger lines with adequate Straight Run, typically 10D Upstream / 5D Downstream for gas applications
Repeatability:	$\pm 0.5\%$ of Reading
Size:	1 – 96 inches
Rating:	ASME CLASS 150 – 2500
CSA:	Class 1, Div.1, Groups B, C & D
Design Temperature:	-328°F to 842°F (-200°C to 450°C) See Options for details
Ambient Temperature:	-50°F to 140°F (-45°C to 60°C)

Electronics

Enclosure:	CSA approved for Class 1, Div. 1, Group B, C & D areas – Enclosure epoxy coated aluminum, NEMA 7/4X
Display:	2 line x 16 character backlit LCD Display with non-intrusive magnetic wand keypad operation
Ambient Temperature:	-40°F to 140°F (-40°C to 60°C), LCD Display will blank out at -10°C
Storage Temperature:	-67°F to 167°F (-55°C to 75°C)
Weight & Dimensions:	8.2 in x 6.6 in (208 mm x 168 mm) 10 lbs (4.5 kg)
Power Supply:	20W maximum, 100-240 VAC (Standard), 12-28 VDC (Optional)
Inputs/Outputs:	Standard Two 4-20mA Isolated Outputs, 600 Ω maximum load Additional I/O available

Documentation (Standard with all Flowmeters):

Drawings, Flow Calculations, Manuals, Certificate of Compliance, Welding Procedures and Qualifications, Hydrotest, NDE Reports, Material Test Reports, CSA, Programming Sheet, ITP, PWF, Optional flow calibration

SX PSignature Series Ultrasonic Flowmeter

Ordering Information

SX - A - B - C - D - E - F - G - H - I - J - K - L - M - N

Example: SX-06-0150-RF-LC-1-2-85-N-1-1-00-4-CRN-NAC-F001000

Option Code	Description
A	Nominal Size
01..96	Nominal Size in Inches
B	Rating
---	No Rating (Typical for Weld Prep Flowmeters)
0150	
0300	
0600	
0900	
1500	
2500	
C	End Connections
RF	Raised Face Flange
WP	Weld Prep
D	Material of Construction
CS	Carbon Steel
LC	Low Temp Carbon Steel
34	304 Stainless Steel
36	316 Stainless Steel
E	# Of Paths
1	Single Path
2	Dual Path
F	Extra Ports on Flowcell body
0..9	Number of additional ports (Port Details to be shown on Drawing)
G	Max Flow
xx	xx m/s custom maximum flow velocity in m/s
45	Maximum flow velocity in m/s
85	Maximum flow velocity in m/s
H	Operating Temperature Range
N	-58°F to +482°F (-50°C to +250°C)
H	-328°F to +842°F (-200°C to +450°C)
I	Mounting /Configuration
1	Direct Mount Transmitter to Flowcell
2	Remote Mount Transmitter (Coaxial Cable Required)
J	Power
1	100-240 VAC
2	12-28 VDC
K	Additional Input / Output
00	No additional input/output
FA	2 Frequency Outputs & 2 Standard Alarms
FT	2 Frequency Outputs & 2 Totalizer Outputs
TA	2 Totalizer Outputs & 2 Standard Alarms
IR	2 Current Inputs & 2 RTD Inputs
II	4 Current Inputs
TI	2 Current Inputs & 2 Totalizer Outputs
FI	2 Current Inputs & 2 Frequency Outputs

1	128 Kbyte Memory capable of logging 10000 data points (approx)with time and date stamp
2	Extended 2MByte Memory capable of logging 70000 data points (approx) with time and date stamp
3	HART communication
4	ModBus digital output
5	ModBus TCP digital output. For communicating MODBUS via Ethernet
6	Ethernet card. Allows PanaView or OPC Server to communicate with meter over the Ethernet.
7	Foundation Fieldbus
M	Optional Extras and Specials (Can be more than one)
CRN	Canadian Registration Number (Specify Province or Provinces)
NAC	NACE Certificate of Compliance
PMI	Positive Material Identification
HAR	Hardness Testing of Production Welds
PWH	Post Weld Heat Treatment
YEL	Yellow Flow Arrows Painted on each side of the Flowcell
JET	Jet Lube Petro Tape only
ICO	Internal Coating (Specify Details)
SSS	Special (Specify)
N	Drawing #
F00XXXX	Flowmeter Drawing #

L	Logging - Digital Communication
0	None



CANADA

Toll Free 1-866-255-2921

USA

Toll Free 1-866-455-2921



Procon Systems (2013) Inc.

Calgary, AB CANADA
9504 Horton Road SW
Calgary, AB T2V 2X4
Toll Free: 1-866-255-2921
Phone: 403-255-2921
Fax: 403-255-3928

Procon Systems (2013) Inc.

Edmonton, AB CANADA
6025 – 99th Street NW
Edmonton, AB T6E 3P1
Toll free: 1-877-844-6665
Phone: 780-437-0244
Fax: 780-438-2893

Procon Systems (2013) Inc.

**Delta, BC V4K-4B7
CANADA**
Toll free: 1-866-455-2921
Phone: 604-940-8757
Fax: 604-940-9126

Procon Systems (2013) Inc.

**Regina, SK S4P-0J3
CANADA**
Toll-free: 1-866-455-2921
Phone: 306-206-2727

Procon Technologies Inc.

Naperville, IL USA
530 Industrial Drive
Naperville, IL 60563
Toll-free: 1-866-455-2921
Phone: 630-357-8540
Fax: 630-357-4918

Procon Technologies Inc.

**Hightstown, NJ 08520
USA**
Toll-free: 1-866-455-2921
Phone: 609-819-7070
Fax: 630-357-4918

**Procon Measurements
and Controls Inc.**

**Cambridge, ON N1R-4T5
CANADA**
Toll-free: 1-866-455-2921
Phone: 519-267-3121
Fax: 519-267-3127

